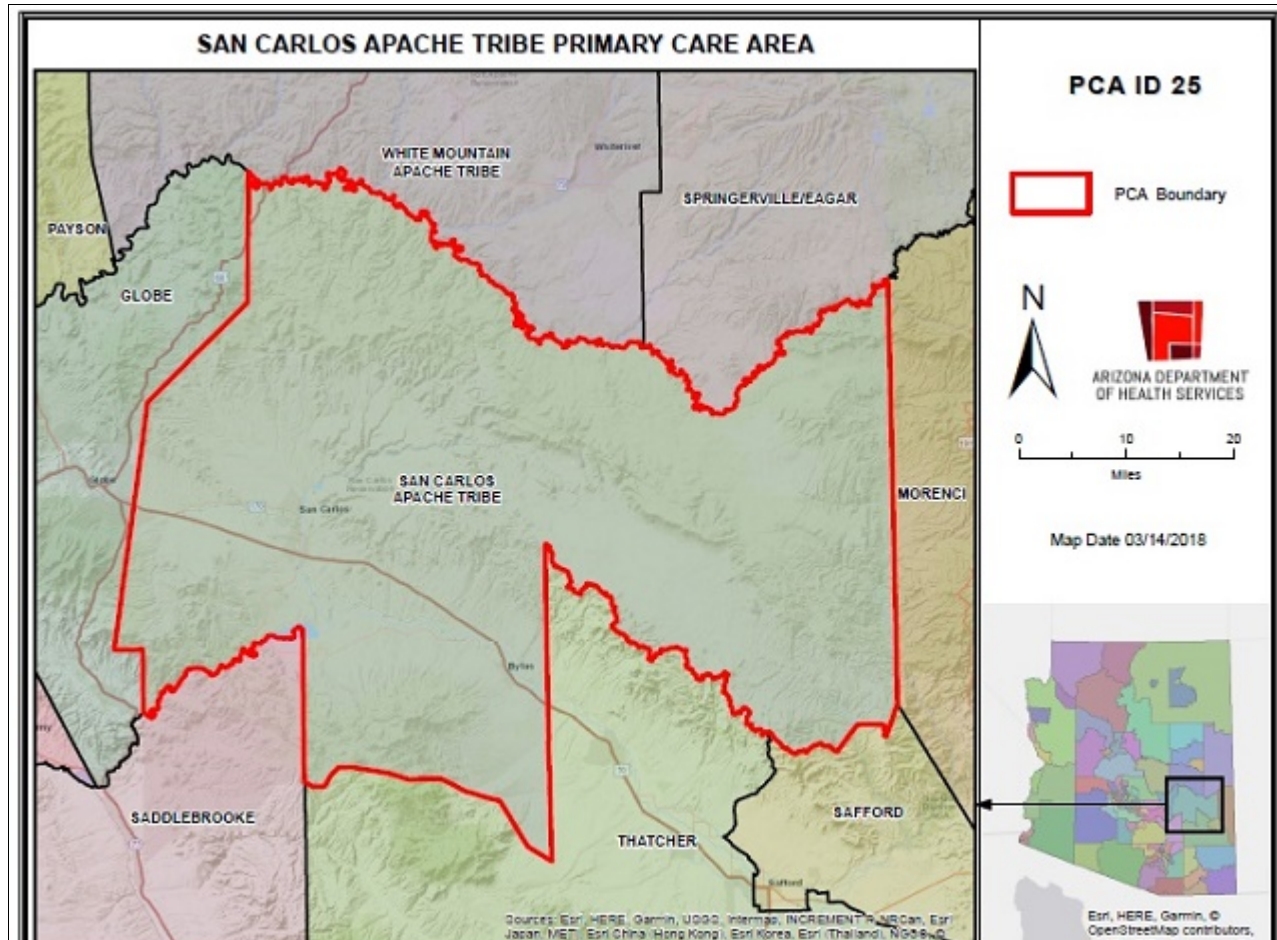


# San Carlos Apache Tribe Primary Care Area (PCA) 2021 STATISTICAL PROFILE

For definitions and sources of data used in these profiles, see:

<http://www.azdhs.gov/documents/prevention/health-systems-development/data-reports-maps/reports/datadocu.pdf>

DESCRIPTION OF AREA	PCA Number .....	25
	Major Population Center .....	San Carlos
	County .....	GRAHAM, GILA, GREENLEE
	Health Planning Region .....	1, 2
	Primary Care Score .....	39
	Rural Code Designation: .....	INDIAN
	Special Tax District? .....	No
	State House Legislative District .....	19, 6
	Designated as AzMUA? .....	Yes
	Designated as Primary Care HPSA .....	Geographic, (San Carlos Apache Tribe)
	Designated as Federal MUA/P .....	50.9, MUA, (Gila County), 61.5, MUA, (Graham and Greenlee Counties)
	Next Nearest Provider .....	Peridot
	2nd Nearest Provider .....	Globe
	Travel Distance to Next Nearest Provider	3.57 miles
Travel Distance to 2nd Nearest Provider...	24.1 miles	

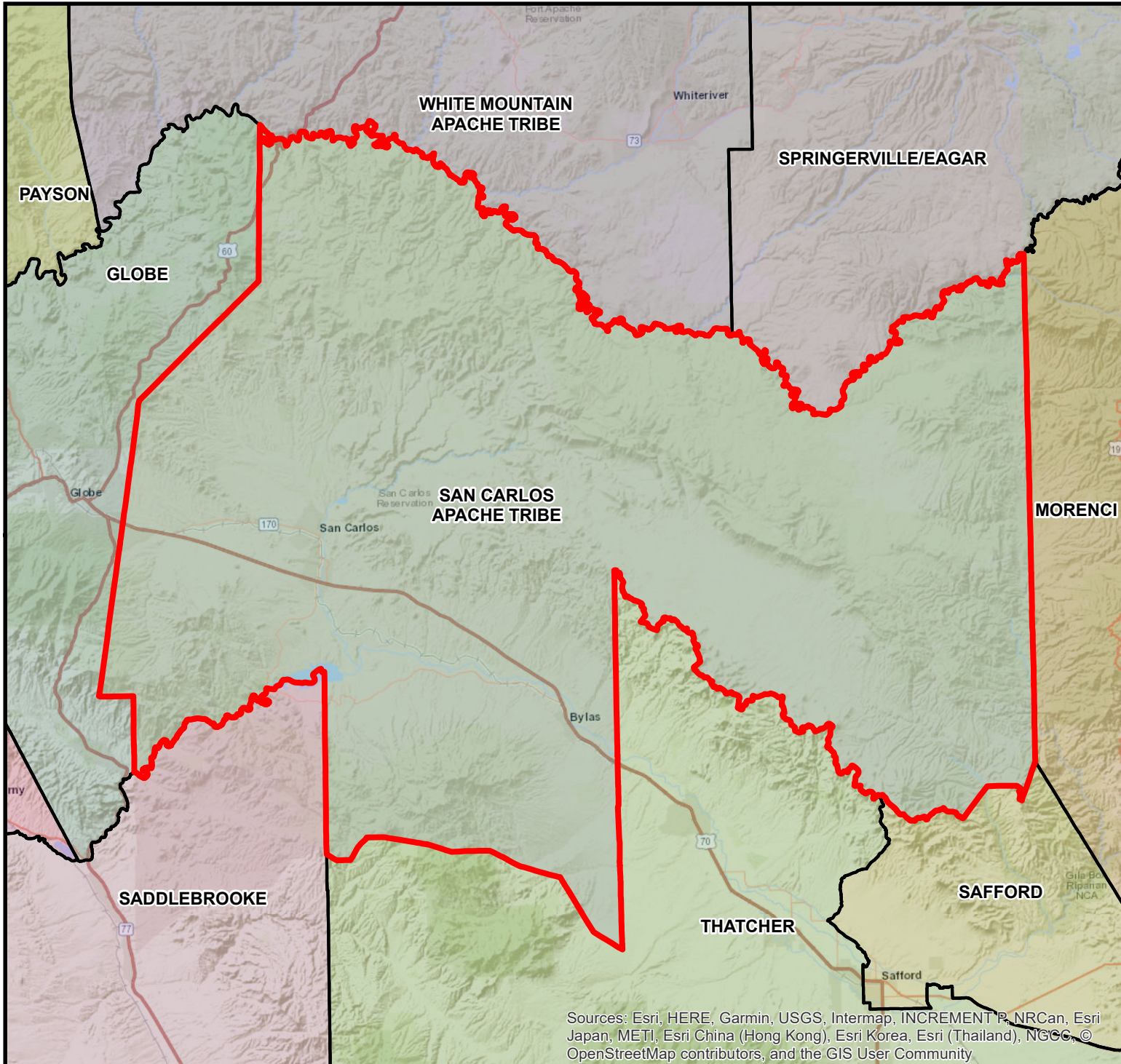


DEMOGRAPHICS	San Carlos Apache Tribe	COUNTY	HEALTH PLANNING REGION	ARIZONA
POPULATION .....	10,313	102,143	6,281,939	7,285,370
Population Density .....	3.8	9.1	147.7	63.9
Persons By Age .....				
0-14 .....	3,322	19,766	1,209,982	1,384,121
15-19 .....	808	6,200	417,208	485,151
20-44 .....	3,576	29,714	2,114,782	2,400,824
45-64 .....	2,040	24,274	1,498,456	1,745,588
65-84 .....	819	19,561	926,535	1,142,268
85 + .....	61	2,519	117,629	139,201
Race/Ethnicity				
White .....	1.3%	76.6%	76.0%	75.8%
American Indian .....	97.6%	13.7%	2.5%	4.0%
Black .....	0.1%	1.2%	4.7%	4.2%
Asian/Pacific Islander .....	0.0%	0.7%	3.4%	3.1%
Other .....	1.0%	7.8%	13.4%	12.9%
Hispanic .....	2.2%	24.6%	31.6%	30.5%
Communities of Color .....	99.3%	43.2%	47.0%	46.6%
Gender				
Females .....	52.5%	48.7%	50.4%	50.3%
Males .....	47.5%	51.3%	49.6%	49.7%
Single Parent Families .....	55.0%	27.7%	27.0%	26.9%
Female Headed Households .....	27.9%	24.5%	26.4%	26.4%
Disability Population .....	12.2%	17.6%	12.6%	13.2%
Speak Other Than English at Home .....	35.3%	18.5%	26.6%	26.7%
INCOME				
Population below 100% FPL .....	44.5%	19.7%	13.4%	14.1%
Population below 200% FPL .....	68.6%	40.5%	31.6%	33.0%
Median Household Income .....	\$32,692	\$45,161	\$68,547	\$62,115
Children <12 in Poverty .....	58.6%	30.6%	19.8%	20.7%
EDUCATION				
Less Than 9th Grade Education .....	19.6%	3.2%	5.0%	5.0%
9th-12th Grade, No Diploma .....	4.2%	10.0%	6.6%	7.0%
High School Graduate .....	40.9%	29.3%	23.0%	23.8%
Some College .....	25.5%	30.2%	24.4%	24.9%
College or Professional Degree Holder .....	9.4%	26.8%	40.9%	39.1%
MISCELLANEOUS				
Overnight Tourist Visits .....	176,421	1,711,339	26,290,729	49,599,807
Unemployed .....	39.5%	12.8%	9.1%	10.0%
"Uninsured" Births .....	38.9%	9.4%	2.2%	2.3%
Medicare Beneficiaries .....	87.3%	98.1%	96.2%	96.3%
Medically Uninsured .....	11.7%	8.4%	10.3%	10.6%
Transportation Score .....	190	104	105	113

RESOURCES	San Carlos Apache Tribe	COUNTY	HEALTH PLANNING REGION	ARIZONA
<b>FACILITIES</b>				
General Hospitals .....	Yes	3	56	71
Hospital Beds/1000 Residents .....	0.0	0.7	1.9	1.9
Designated as Sole Community Provider?	No	3	43	56
Specialty Beds .....	0	0	3,396	3,645
Skilled Nursing Facilities .....	0	4	92	102
Nursing Beds .....	0	469	10,789	11,632
<b>SERVICES</b>				
Licensed Home Health Agencies .....	0	5	151	179
Ambulatory Care Sites Type .....	D	A, B, C, D, E	A, B, C, D, E	A,B,C,D,E
Licensed Pharmacies .....	0	18	1,167	1,332
Certified Ambulance Services .....	1	8	68	106
<b>PERSONNEL</b>				
Primary Care Providers .....	6.0	84	8,644	9,751
Ratio-Population:Provider .....	1,719 :1	1,216:1	727 :1	747 :1
Nurse Practitioners .....	9	118	8,807	9,932
Physician Assistants .....	3	46	2,722	3,049
Registered Nurses .....	14	915	70,022	80,111
Midwives .....	0	2	254	312
Dentists .....	1	31	3,893	4,325
<b>UTILIZATION</b>				
<b>AMBULATORY CARE SENSITIVE CONDITIONS</b>				
ACSs/1000 Residents Age <65 .....	49.3	56.4	34.0	34.5
Points Above/Below (-) Statewide Average	14.8	21.9	-0.5	***
<b>HOSPITALIZATION</b>				
Inpatient Days/1000 Residents .....	1,254	610	567	570
Inpatient Days/1000 by Age Group:				
0-14 yrs .....	539	367	325	320
15-19 yrs .....	616	326	294	285
20-44 yrs .....	1,195	460	404	400
45-64 yrs .....	1,872	664	609	611
65-84 yrs .....	3,038	1,037	1,141	1,122
85+ yrs .....	984	1,080	1,824	1,815
Leading Diagnosis .....	Sepsis, unspecified organ			
Leading Procedure .....	Performance of Urinary Filtration, Intermittent, Less th			
(Non-maternity related)				
*** Not Applicable, ++ Insufficient Data, ## Not Available				

HEALTH STATUS	San Carlos Apache Tribe	COUNTY	HEALTH PLANNING REGION	ARIZONA
INFANT MORTALITY RATE .....	++	6.9	5.6	5.7
<b>MORTALITY, LEADING CAUSE OF DEATH</b>				
Infant .....		Disorders related to short gestation and low birth w		
Child (1-14) .....		Other and unspecified injuries of head		
Adolescent (15-19) .....		Asphyxiation		
Young Adult (20-44) .....		Alcoholic liver disease		
Mid Age (45-64) .....		Cardiac arrest		
Elderly (65-84) .....		Cardiac arrest		
Aged (85+) .....		Alzheimer's disease		
PERCENT PREMATURE MORTALITY	82.6%	58.5%	54.2%	54.9%
<b>NATALITY</b>				
Fertility Rate/1000 Females 15-44 yrs .....	112.5	76.0	61.1	61.4
Birth Rate/1000 Residents .....	24.6	11.7	12.0	11.8
0-4 Prenatal Care Visits/1000 Births .....	309.1	129.6	63.7	66.5
<b>Prenatal Care Began:</b>				
None .....	12.6%	4.9%	5.6%	5.6%
Trimester One .....	39.4%	61.9%	71.0%	70.4%
Trimester Two .....	28.9%	24.2%	17.7%	18.1%
Trimester Three .....	18.7%	8.8%	5.6%	5.9%
Unknown .....	0.4%	0.2%	0.1%	0.0%
Low-weight Births/1000 Live Births .....	86.3	83.7	73.0	72.8
Teen Births/1000 Females 14-19 yrs .....	63.4	33.0	19.8	20.2
<b>Area Location IDs:</b>				
Census Tracts: 040079404.00, 040099405.00, 040119601.00				
<b>Other Places in area:</b>				
Arsenic Tubs, Ash Creek Ranch, Bear Canyon Junction, Black River, Bylas, Calva, Coolidge Dam, Cutter, Dehorn, Natches, Natural Corral, Peridot, Point of Pines, Rocky Junction, San Carlos, San Carlos, Sawmill, Seneca, Tule Tubs, Turkey Spring Corral				
*** Not Applicable, ++ Insufficient Data, ## Not Available				

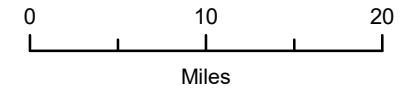
# SAN CARLOS APACHE TRIBE PRIMARY CARE AREA



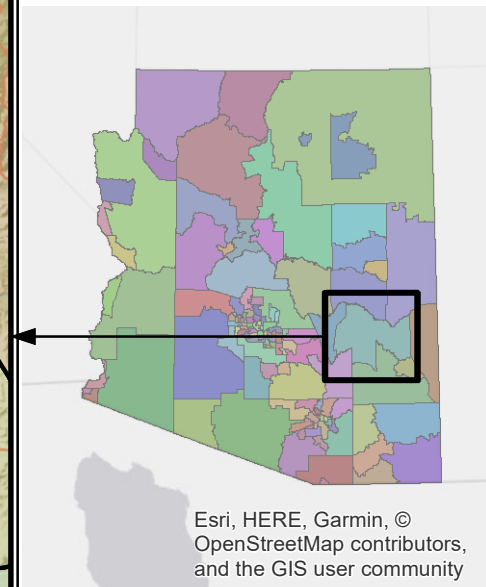
**PCA ID 25**



ARIZONA DEPARTMENT  
OF HEALTH SERVICES



Map Date 03/14/2018



Sources: Esri, HERE, Garmin, USGS, Intermap, INCREMENT P, NRCan, Esri Japan, METI, Esri China (Hong Kong), Esri Korea, Esri (Thailand), NGCC, © OpenStreetMap contributors, and the GIS User Community

Esri, HERE, Garmin, © OpenStreetMap contributors, and the GIS user community